

MULTIGENERATIONAL DESIGNS

HOUSE REVIEW:

TOPAZ PLAN 4

ARCHITECT

Kevin L. Crook Architecture
Kevin L. Crook
kcrook@klcarch.com
949.660.1587
klcarch.com

DIMENSIONS

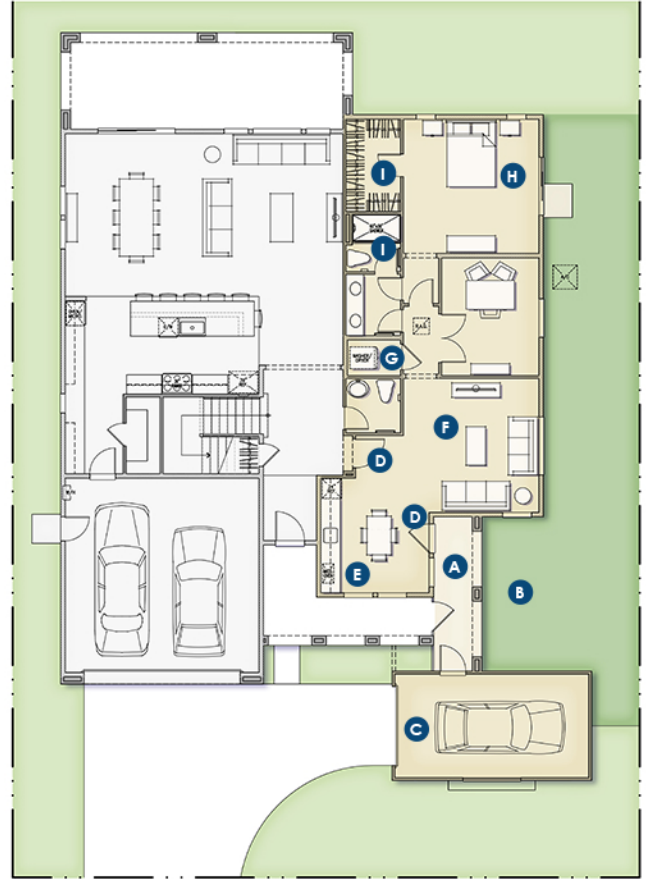
Width: 15 feet
Depth: 24 Feet
Living area (per unit): 1,998sf



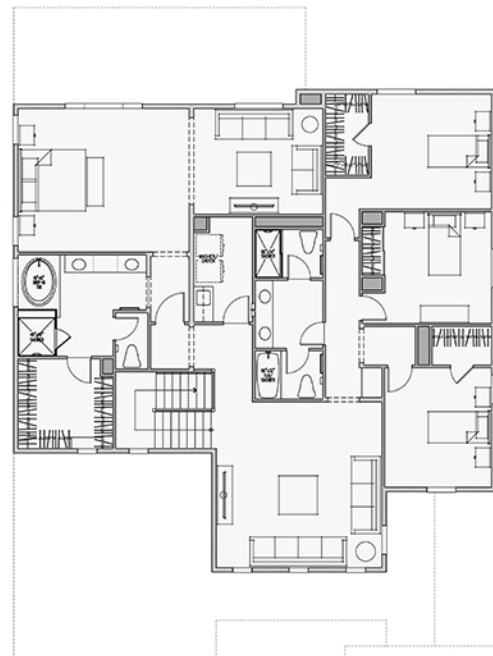
This multigenerational home provides a lock-off single-level multi-gen suite, creating a home within a home. A dedicated single-car garage and breezeway entrance ensure privacy, while a secondary interior entrance allows direct access when needed.

Essentially a one-bedroom home with a study and open-concept living, dining and kitchenette, this multi-gen design offers secluded living spaces for all.

- A** Secure access from a hidden, gated breezeway from the main porch or garage
- B** Side courtyard for outdoor entertaining defined by the garage
- C** Single-car garage dedicated to the multi-gen suite
- D** Two entry options: one from the exterior breezeway and another from inside the home
- E** Dining room with kitchenette provides a dedicated informal dining space and food prep area with views
- F** Sitting room is arranged informally as a continuation of the dining area
- G** A stacked washer/dryer tucked into the hallway saves space
- H** The bedroom has a view out to the expansive side yard
- I** Dedicated bathroom and walk-in closet
- J** Optional office is an additional creative space for the multi-gen resident



FIRST FLOOR



SECOND FLOOR