

POCKET NEIGHBORHOODS

HOUSE REVIEW:

ARCHITECT

Kevin L. Crook Architecture
Kevin L. Crook
kcrook@klcarch.com
949.660.1587
klcarch.com

DIMENSIONS

Width: 120 feet
Depth: 50 Feet
Living area : 1,540 - 1,825 sf

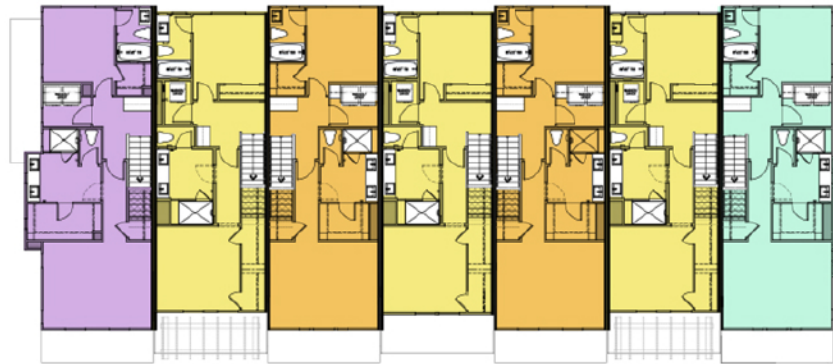


This pocket neighborhood bridges commercial and residential neighborhoods, with a transition between the old and new. The connecting street bisects the site providing a link between a local and collector road.

Contemporary-style elevations create a street scene that adds variety and value to this neighborhood. Homes front the collector road with porches, entry stoops and private decks above to engage the street, enhancing safety is front greens courts.

All of the townhomes feature three bedrooms and a fourth optional bedroom, with some offering bonus room/home office/bedroom (with bath) on the first level.

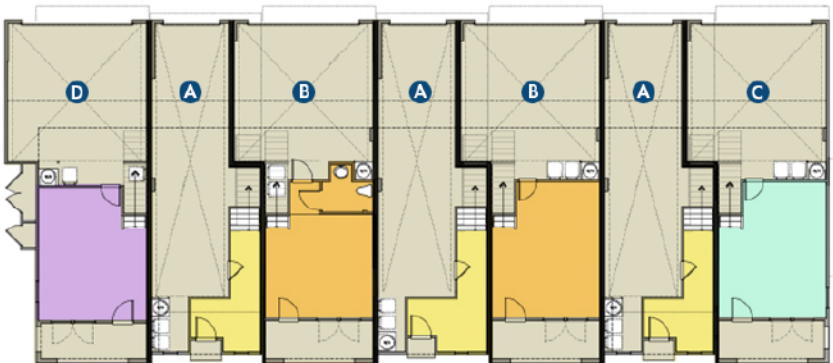
Second floors consist of a private deck, great room, kitchen, and a bedroom with an en suite bath. Third floors are composed of bedrooms, baths and laundry. Each resident has a two-car tandem garage.



THIRD FLOOR



SECOND FLOOR



FIRST FLOOR

- A** Plan A
- B** Plan B
- C** Plan C
- D** Plan D