

HOUSE REVIEW:

LIVE/WORK

By Larry W. Garnett, FAIBD,
House Review Lead Designer

The concept of living above your store is actually an old idea found in most small towns around the nation. Over the last few years, we've witnessed a reemergence of buildings with residential living above office and retail space, and during the current pandemic, the ability to run a business or work from home has taken on even more significance as people have struggled to discover a secluded nook or cranny at home where they can find a moment of privacy to join a video conference.

Although nobody really knows the long-term effects, there seems to be little doubt that work patterns will change for many of us. The slow-paced development of live/work projects is likely to accelerate now that the concept has been tried and proven to be successful for many workers.

The following plans present thoughtful solutions to the challenges of designing and developing live/work projects.



LIVE WORK SFD

ARCHITECT

Kevin L. Crook Architect
Kevin Crook
kcrook@klcarch.com
949.660.1587
klcarch.com

DIMENSIONS

Width: 24 feet
Depth: 37 feet
Living area: 1,998 sf

This detached live/work infill project

is located within a traditionally commercial neighborhood. Each three-story detached home has approximately 250 square feet of work space at the ground floor, a flexible area that can either serve the owner as a home-based business or be leased out to a business tenant and locked off from the residence.

Each home is about 1,998 square feet, with primary living space on the second floor. The dining area opens out to a generously sized private deck. The third floor is composed of bedrooms, baths, and a laundry.

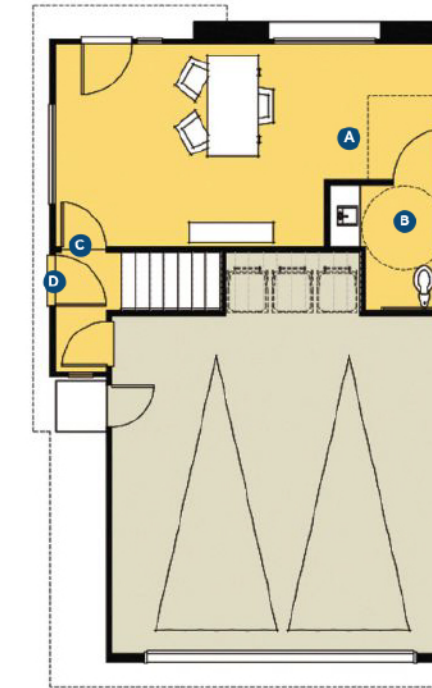
Each unit also has a two-car garage as well as an adjacent uncovered parking space and additional guest parking on the street.

Contemporary-style elevations feature a combination of stucco and siding to create a street scene that adds variety and value to the neighborhood.

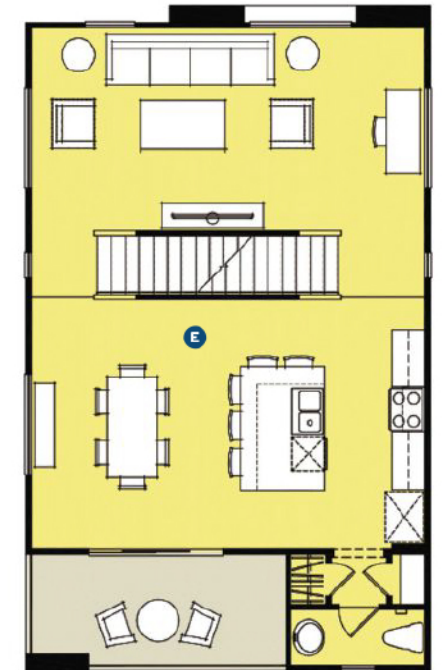
- A** Work space on ground level
- B** Private powder room
- C** Work space private entry
- D** Shared entry to living area, work space, and garage
- E** First-floor living space features common areas
- F** Second-floor living space is dedicated to bedrooms/private areas

SITE PLAN

- G** Common drive
- H** Common open space
- I** Private yard area
- J** Work space
- K** Two-car garage
- L** Guest parking



GROUND FLOOR



FIRST FLOOR



SECOND FLOOR



SITE PLAN