

## SMALL HOMES THAT LIVE BIG

[HOUSE REVIEW]



6-PACK CLUSTER

**ARCHITECT**

Kevin L. Crook  
kcrook@klcarch.com  
949.660.1587

**PLAN SIZE**

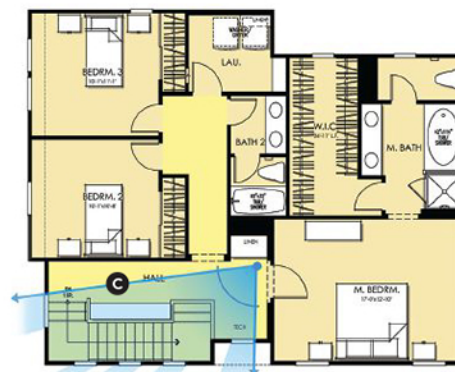
Width: 38 feet  
Depth: 32 feet  
Living area: 1,801 sf

**W**hen it comes to small-lot cluster housing, or any product with more confined spaces, connection to the outdoors is crucial in making the home live bigger. Views through windows and doors to the outdoor living space not only help to expand the room, but the incoming light also serves to make the rooms feel larger. This solution, along with combining what was three individual spaces into one large space, makes a home with a small footprint feel larger.

- A** Entry has a defined yet open feel with open stair railings and natural light spilling in from second-floor windows and the powder room
- B** View upon entering the great room is expansive, with furnishings demarcating the space and views through windows into side and rear yards
- C** Second floor opens with natural light and a defined entry into either the master bedroom or the secondary bedroom areas



FIRST FLOOR



SECOND FLOOR