

STARTER HOMES

[HOUSE REVIEW]

THE COTTAGES

ARCHITECT

Kevin L. Crook
 kcrook@klcarch.com
 949.660.1587

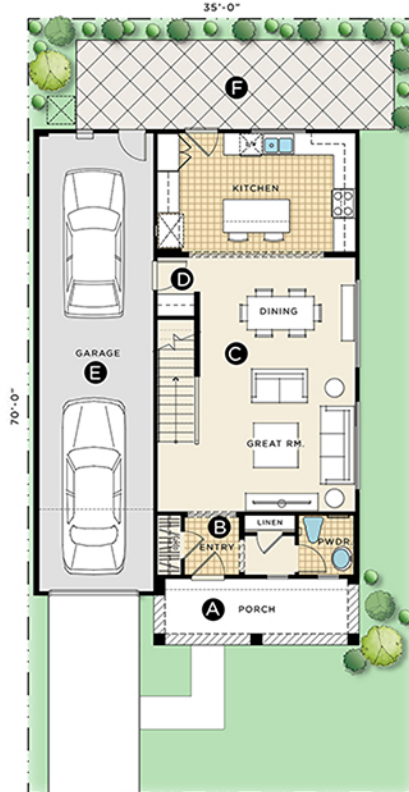
PLAN SIZE

Width: 29 feet, 4 inches
 Depth: 46 feet, 6 inches
 Living area: 1,826 sf



This plan successfully pulled first-time buyers from surrounding apartment communities in Northern California. Being detached was a huge draw, even with just 5 feet, 8 inches separating the homes. Although the lot is just 2,450 square feet, the 350-square-foot private rear yard enticed potential buyers. The garages are designed as tandem spaces, allowing the architecture to dominate on product that is just over 29 feet wide, and providing added value for the price point, making it attainable for single-income buyers.

- A** Front porch
- B** Entry vestibule
- C** Large great room
- D** Drop zone
- E** Tandem garage
- F** Private 350-square-foot rear yard



FIRST FLOOR



SECOND FLOOR